

---

<b>Cable ID</b> DATALAND SIX PLUS	<b>Summary</b> PASS	<b>Test Limit</b> TIA Cat 6 Perm. Link	<b>Length</b> 90.8 m	<b>Headroom</b> 8.3 dB (NEXT)	<b>Date / Time</b> 10/22/2020 05:30 PM
--------------------------------------	------------------------	---	-------------------------	----------------------------------	---

Total Length:	90.8 m
Number of Reports:	1
Number of Passing Reports:	1
Number of Failing Reports:	0
Number of Warning Reports:	0
Documentation Only:	0



**Cable ID: DATALAND SIX PLUS**

Date / Time: 10/22/2020 05:30:28 PM

Headroom 8.3 dB (NEXT 12-45)

Test Limit: TIA Cat 6 Perm. Link

Cable Type: Cat 6 U/UTP

NVP: 69.0%

Operator: IRSA

Software Version: V5.6 Build 5

Limits Version: V6.4

Calibration Date:

Main (Module): 10/10/2017

Remote (Module): 10/10/2017

**Test Summary: PASS**

Model: DSX-5000

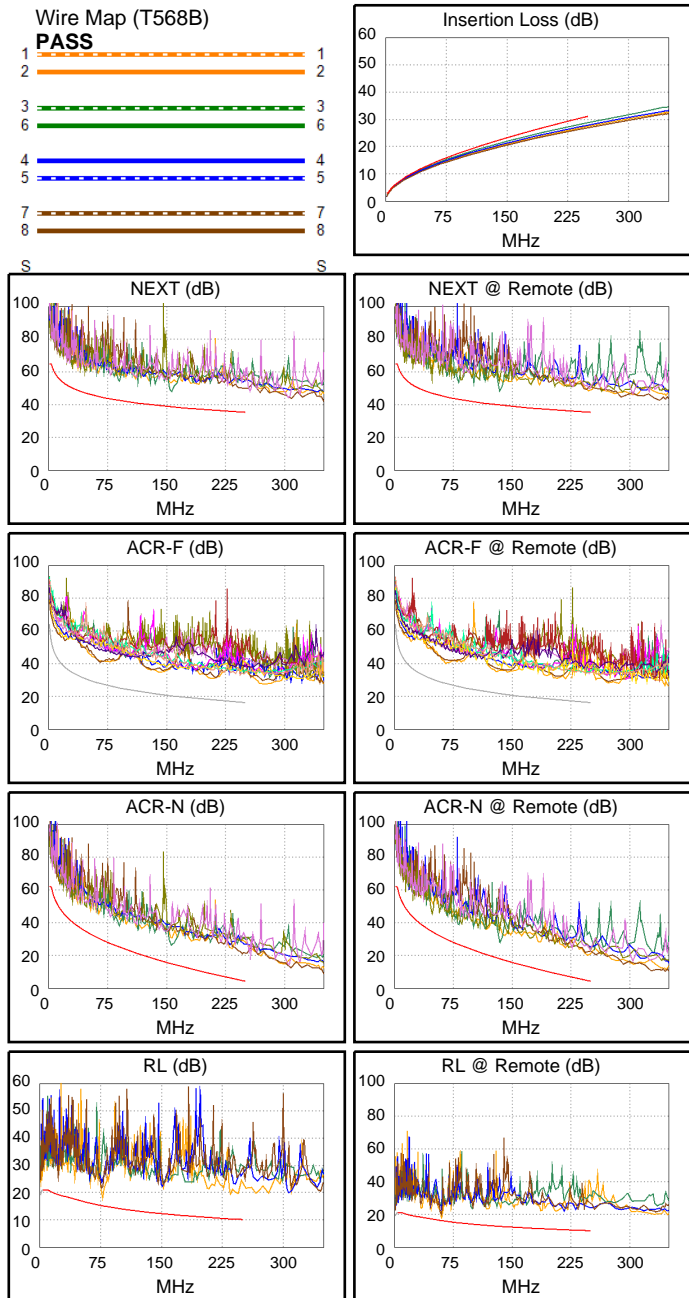
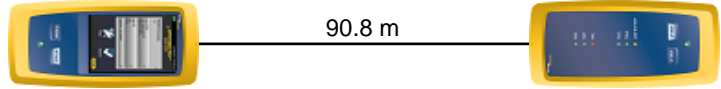
Main S/N: 2525377

Remote S/N: 2525565

Main Adapter: DSX-PLA004

Remote Adapter: DSX-PLA004

Length (m), Limit 90.0	[Pair 12]	90.8
Prop. Delay (ns), Limit 498	[Pair 36]	454
Delay Skew (ns), Limit 44	[Pair 36]	15
Resistance (ohms)	[Pair 36]	13.07
Insertion Loss Margin (dB)	[Pair 36]	2.3
Frequency (MHz)	[Pair 36]	250.0
Limit (dB)	[Pair 36]	31.1



Worst Case Margin Worst Case Value

PASS	MAIN	SR	MAIN	SR
Worst Pair	12-45	12-45	12-45	12-45
<b>NEXT (dB)</b>	9.3	8.3	9.3	8.3
Freq. (MHz)	156.0	134.5	156.0	134.5
Limit (dB)	38.7	39.7	38.7	39.7
Worst Pair	12	12	12	36
<b>PS NEXT (dB)</b>	10.6	10.3	10.6	12.3
Freq. (MHz)	156.5	134.5	156.5	246.0
Limit (dB)	36.1	37.2	36.1	32.8

PASS	MAIN	SR	MAIN	SR
Worst Pair	36-12	12-36	12-36	12-36
<b>ACR-F (dB)</b>	12.9	12.2	13.0	12.5
Freq. (MHz)	65.5	65.3	207.0	212.5
Limit (dB)	27.9	27.9	17.9	17.6
Worst Pair	12	36	12	12
<b>PS ACR-F (dB)</b>	15.4	14.5	15.7	15.0
Freq. (MHz)	145.0	65.3	212.0	211.0
Limit (dB)	18.0	24.9	14.7	14.7

N/A	MAIN	SR	MAIN	SR
Worst Pair	12-45	12-45	36-45	12-36
<b>ACR-N (dB)</b>	11.4	10.0	16.2	15.3
Freq. (MHz)	156.0	134.5	246.5	247.0
Limit (dB)	14.9	17.9	4.6	4.5
Worst Pair	12	36	36	36
<b>PS ACR-N (dB)</b>	13.1	11.8	16.6	14.6
Freq. (MHz)	156.5	47.8	246.5	246.0
Limit (dB)	12.3	32.1	2.0	2.0

PASS	MAIN	SR	MAIN	SR
Worst Pair	12	12	12	12
<b>RL (dB)</b>	2.6	1.6	2.6	1.6
Freq. (MHz)	78.0	59.8	78.0	59.8
Limit (dB)	15.1	16.2	15.1	16.2

Compliant Network Standards:  
 10BASE-T      100BASE-TX      100BASE-T4  
 1000BASE-T      ATM-25      ATM-51  
 ATM-155      100VG-AnyLan      TR-4  
 TR-16 Active      TR-16 Passive